

**Motor Driver, Forward/Reverse, Low Saturation Voltage, 28V**
**GENERAL DESCRIPTION**

The HV8548 is a 2-channel low saturation voltage forward/reverse motor driver IC. It is optimal for motor drive in 12V and 24V system products and can drive either two DC motors, one DC motor using parallel connection, or it can drive a stepper motor in Full-step and Half-step.

The output driver block of each H-bridge consists of N-channel power MOSFETs configured as an H-bridge to drive the motor windings. Each H-bridge includes circuitry to regulate or limit the winding current.

Internal shutdown functions are provided for under-voltage lockout, and over temperature. A low-power sleep mode is also provided.

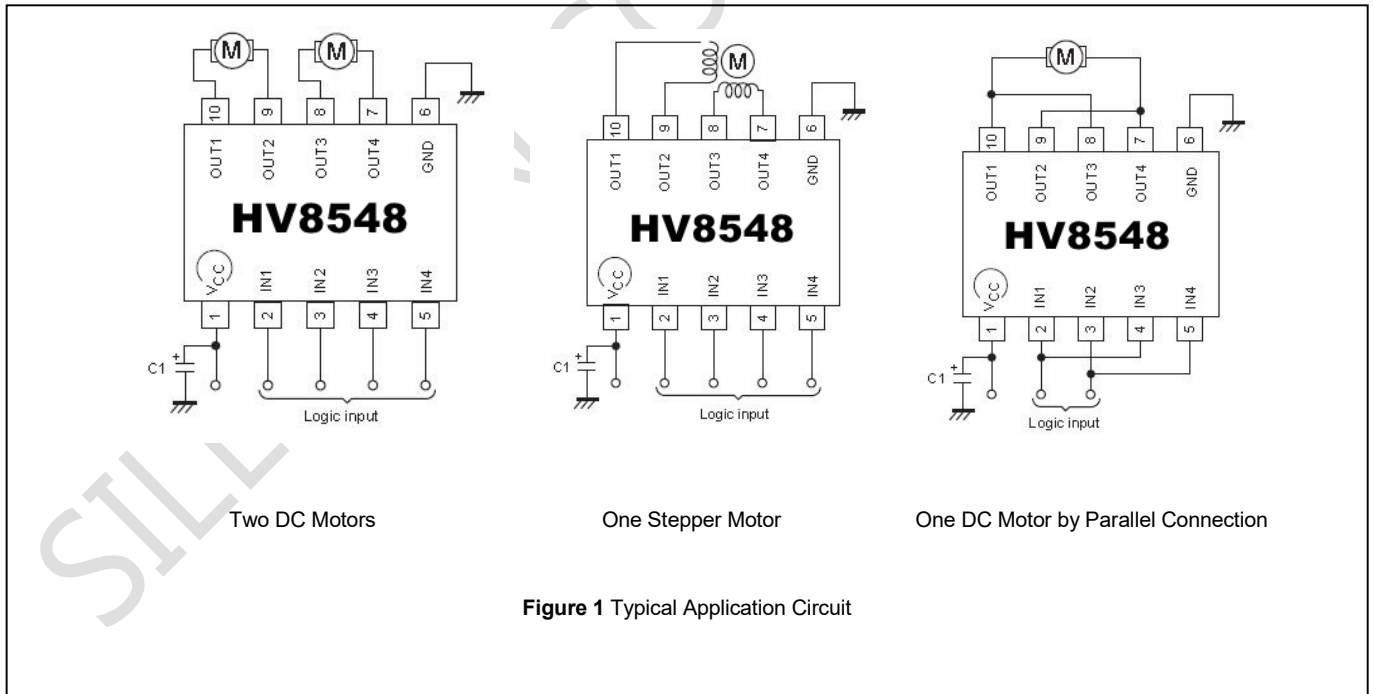
The HV8548 is available in a compact SOIC-10 package.

**FEATURES**

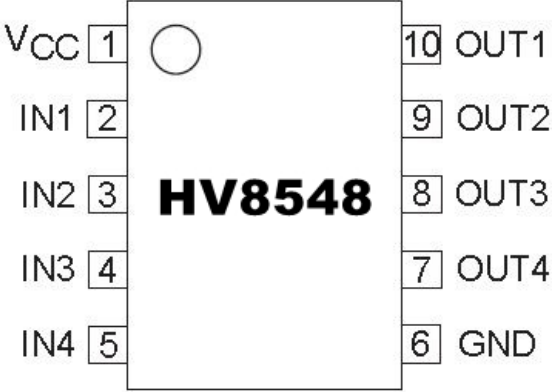
- DMOS output transistor adoption (upper and lower total  $R_{ds(on)} = 0.65 \Omega$  Typ.).
- $V_{CC}$  Max = 28V,  $I_o$  Max = 1.2A,  $I_o$  RMS = 0.8A.
- 4V to 28V operating supply voltage range (The control system power supply is unnecessary.).
- The compact package (SOIC-10) is adopted.
- Current consumption 0 when standby mode.
- It is possible to connect in parallel (parallel connection of drive channel).
- Built-in brake function.

**TYPICAL APPLICATIONS**

- Refrigerator
- Flatbed Scanner, Document Scanner
- POS Printer, Label Printer
- PoE Point of Sales Terminal
- Clothes Dryer
- Vacuum Cleaner
- Time Recorder

**TYPICAL APPLICATION CIRCUIT**

**Figure 1** Typical Application Circuit

**PIN CONFIGURATION**

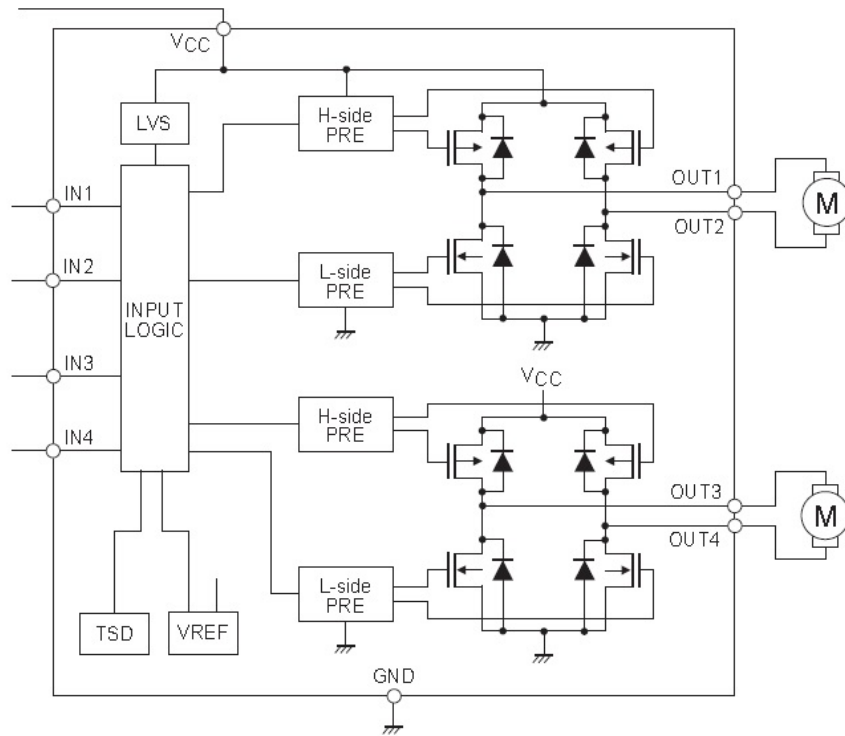
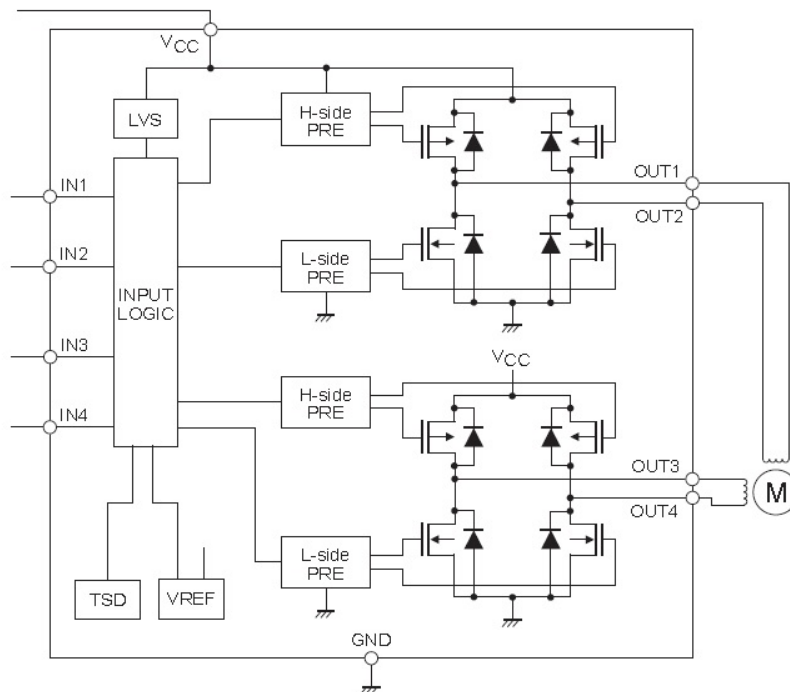
Package	Pin Configuration (Top View)
SOIC-10	 <p style="text-align: center;"><b>HV8548</b></p>

**PIN DESCRIPTION**

No.	Pin	Description
1	V <sub>CC</sub>	Power-supply voltage pin. A 10- $\mu$ F (minimum) ceramic bypass capacitor to GND is recommended.
2	IN1	Logic input pin of OUT1 and OUT2. Internal pull-down.
3	IN2	Logic input pin of OUT1 and OUT2. Internal pull-down.
4	IN3	Logic input pin of OUT3 and OUT4. Internal pull-down.
5	IN4	Logic input pin of OUT3 and OUT4. Internal pull-down.
6	GND	Device ground.
7	OUT4	Driving output pin. Motor coil is connected between terminal OUT3 (pin8).
8	OUT3	Driving output pin. Motor coil is connected between terminal OUT4 (pin7).
9	OUT2	Driving output pin. Motor coil is connected between terminal OUT1 (pin10).
10	OUT1	Driving output pin. Motor coil is connected between terminal OUT2 (pin9).

**ORDERING INFORMATION**
**Industrial Range: -40°C to +125°C**

Order Part No.	Package	QTY
HV8548MC-AH	SOIC-10, Pb-Free	2500/Reel

**FUNCTIONAL BLOCK DIAGRAM**

**Figure 2 Two DC Motors Drive**

**Figure 3 One Stepper Motor Drive**

**ABSOLUTE MAXIMUM RATINGS**

Symbol	Definition		Min.	Max.	Units
V <sub>CC</sub> Max	Maximum power supply voltage (V <sub>CC</sub> )		-0.3	+30	V
V <sub>OUT</sub>	Output voltage (OUT1, OUT2, OUT3, OUT4)		-0.3	+30	
V <sub>IN</sub>	Input voltage (IN1, IN2, IN3, IN4)		-0.3	+6	
I <sub>GND</sub>	Maximum GND pin sink/source current.		---	+1.2	A
P <sub>D</sub>	Package power dissipation @ T <sub>A</sub> ≤ +25°C	SOIC-10	---	1.0	W
R <sub>thJA</sub>	Thermal resistance, junction to ambient	SOIC-10	---	80	°C/W
T <sub>J</sub>	Junction temperature		---	150	°C
T <sub>S</sub>	Storage temperature		-55	150	
T <sub>L</sub>	Lead temperature (soldering, 10 seconds)		---	300	

**Note:**

Absolute maximum ratings indicate sustained limits beyond which damage to the device may occur. All voltage parameters are absolute voltages referenced to COM. The thermal resistance and power dissipation ratings are measured under board mounted and still air conditions.

**RECOMMENDED OPERATING CONDITIONS**

Symbol	Definition	Min.	Max.	Units
V <sub>CC</sub>	Power supply voltage (V <sub>CC</sub> )	4.0	28	V
V <sub>IH</sub>	Logic "1" input voltage (IN1, IN2, IN3, IN4)	1.8	5.5	
V <sub>IL</sub>	Logic "0" input voltage (IN1, IN2, IN3, IN4)	-0.3	+0.7	
V <sub>LO</sub>	Low-side output voltage	0	V <sub>CC</sub>	
T <sub>A</sub>	Ambient temperature	-40	125	°C

**Note:**

The input/output logic timing diagram is shown in Fig. 1. For proper operation the device should be used within the recommended conditions. The V<sub>S</sub> offset rating is tested with all supplies biased at a 15 V differential.

**STATIC ELECTRICAL CHARACTERISTICS**
 $V_{CC} = 12\text{ V}$  and  $T_A = 25^\circ\text{C}$  unless otherwise specified.

Symbol	Parameter	Condition	Min.	Typ.	Max.	Unit
$V_{CC}$	Power supply voltage		4.0	---	28	V
$V_{CCUV+}$	$V_{CC}$ supply undervoltage positive going threshold	$V_{CC} = 12\text{ V}$	3.55	3.8	3.95	V
$V_{CCUV-}$	$V_{CC}$ supply undervoltage negative going threshold		3.3	3.5	3.65	
$V_{IH}$	Logic "1" input voltage		1.8	---	---	
$V_{IL}$	Logic "0" input voltage		---	---	0.7	
$I_{CC0}$	Quiescent current (standby mode)	$V_{CC} = 12\text{ V}$ , $IN1=IN2=IN3=IN4="0"$	---	---	1	$\mu\text{A}$
$I_{CC1}$	Operating current (no load)	$V_{CC} = 12\text{ V}$ , $IN1+IN2+IN3+IN4="1"$	---	1.7	2.3	mA
$I_{CC}$	Quiescent current	$V_{CC} = 12\text{ V}$ , $IN1/IN2/IN3/IN4$ floating	35	50	65	$\mu\text{A}$
$T_{SD}$	Thermal shutdown temperature		150	160	170	$^\circ\text{C}$
$T_{SD\_HYS}$	Thermal shutdown hysteresis			25		$^\circ\text{C}$
$R_{DSON}$	Output ON resistance (high-side and low-side total)	$I_{OUT} = 0.8\text{ A}$		650		m $\Omega$
$I_{OLEAK}$	Output leakage current	$V_O = 30\text{ V}$	---	---	10	$\mu\text{A}$
$V_D$	Diode forward voltage	$I_D = 0.8\text{ A}$	---	1.0	1.2	V

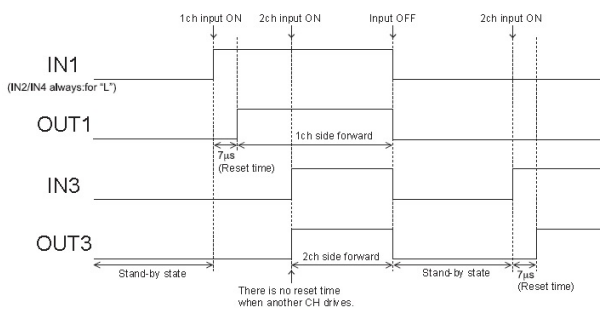
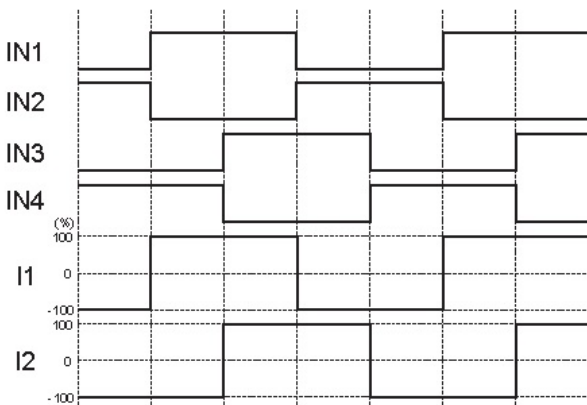
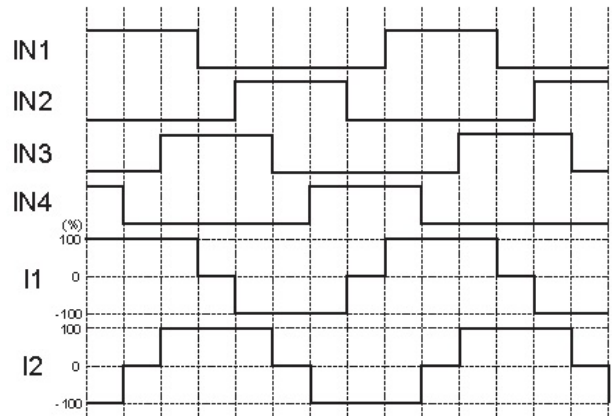
**APPLICATION INFORMATION**
**DCM Output Control Logic**

Input				Output				Remarks
IN1	IN2	IN3	IN4	OUT1	OUT2	OUT3	OUT4	
L	L	L	L	OFF	OFF	OFF	OFF	Stand-by
L	L			OFF	OFF			Stand-by
H	L			H	L			1CH Forward
L	H			L	H			1CH Reverse
H	H			L	L			1CH Brake
		L	L			OFF	OFF	Stand-by
		H	L			H	L	2CH Forward
		L	H			L	H	2CH Reverse
		H	H			L	L	2CH Brake

**Timing**

About the switch time from the stand-by state to the state of operation, when IN1, IN2, IN3, IN4 are logic "0", the HV8548 has completely stopped operating. After the time of reset of about 7 $\mu$ s of and internal setting, it shifts to a prescribed output status corresponding to the state of the input when the signal enters the input terminal.

Reset of about 7 $\mu$ s doesn't hang even if the motor is driven from the stand-by state when either CH drives and the output becomes an output status corresponding to the state of the input. As for full power TR between the reset time, turning off is maintained.


**Figure 4 Control Timing**
**Current Waveforms**

**Figure 5 Full-step Mode**

**Figure 6 Half-step Mode**
**Thermal Shutdown**

The thermal shutdown circuit is incorporated and the output is turned off when junction temperature exceeds 160°C. As the temperature falls by hysteresis, the output turned on again.

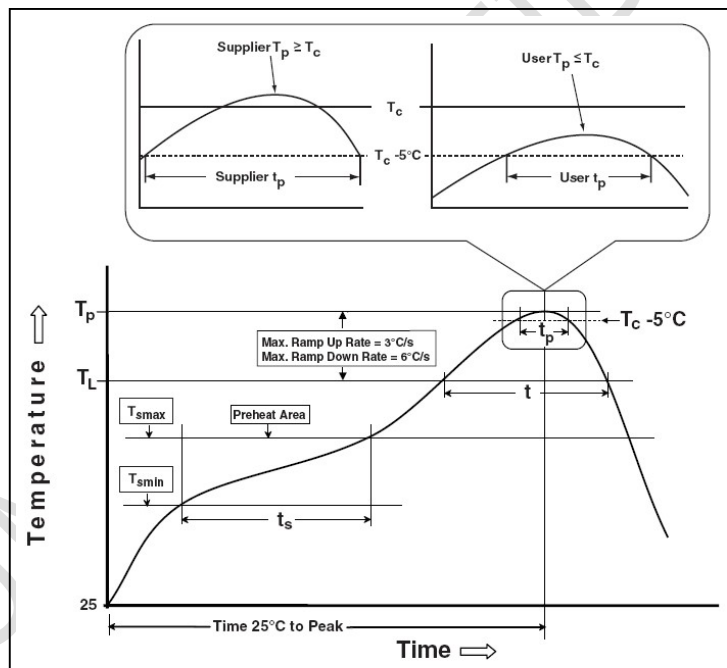
The thermal shutdown circuit doesn't guarantee the protection of the final product because it operates when the temperature exceeds the junction temperature of  $T_{jmax}=150^{\circ}\text{C}$ .

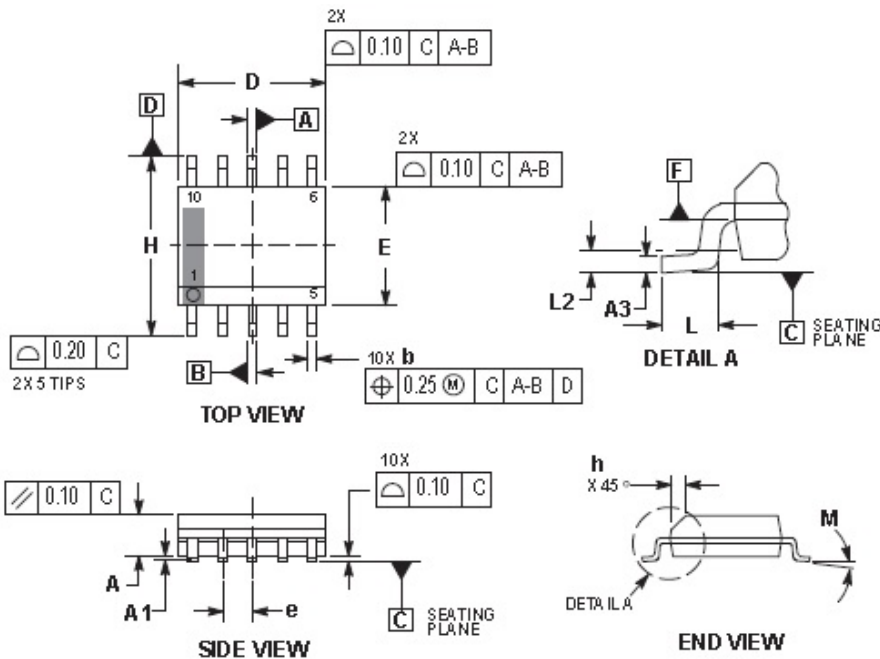
$$T_{SD} = 160^{\circ}\text{C (TYP)}$$

$$T_{SD\_HYS} = 25^{\circ}\text{C (TYP)}$$

**CLASSIFICATION REFLOW PROFILES**

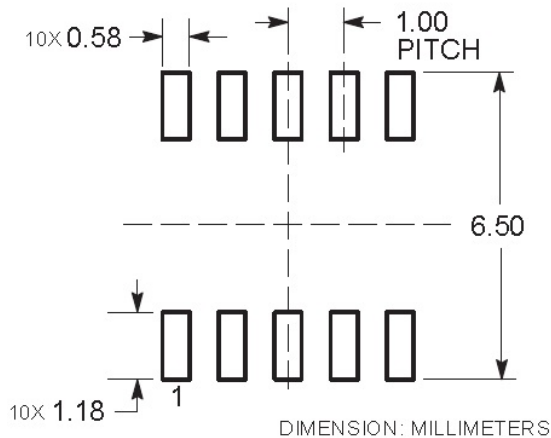
Profile Feature	Pb-Free Assembly
Preheat & Soak	
Temperature min (T <sub>smin</sub> )	150°C
Temperature max (T <sub>smax</sub> )	200°C
Time (T <sub>smin</sub> to T <sub>smax</sub> ) (t <sub>s</sub> )	60-120 seconds
Average ramp-up rate (T <sub>smax</sub> to T <sub>p</sub> )	3°C/second max.
Liquidous temperature (T <sub>L</sub> )	217°C
Time at liquidous (t <sub>L</sub> )	60-150 seconds
Peak package body temperature (T <sub>p</sub> )*	Max 260°C
Time (t <sub>p</sub> )** within 5°C of the specified classification temperature (T <sub>c</sub> )	Max 30 seconds
Average ramp-down rate (T <sub>p</sub> to T <sub>smax</sub> )	6°C/second max.
Time 25°C to peak temperature	8 minutes max.


**Figure 7 Classification Profile**

**PACKAGE CASE OUTLINES**

**NOTES:**

1. DIMENSIONING AND TOLERANCING PER ASME Y14.5M, 1994.
2. CONTROLLING DIMENSION: MILLIMETERS.
3. DIMENSION  $b$  DOES NOT INCLUDE DAMBAR PROTRUSION. ALLOWABLE PROTRUSION SHALL BE 0.10mm TOTAL IN EXCESS OF ' $b$ ' AT MAXIMUM MATERIAL CONDITION.
4. DIMENSIONS  $D$  AND  $E$  DO NOT INCLUDE MOLD FLASH, PROTRUSIONS, OR GATE BURRS. MOLD FLASH, PROTRUSIONS, OR GATE BURRS SHALL NOT EXCEED 0.15mm PER SIDE. DIMENSIONS  $D$  AND  $E$  ARE DETERMINED AT DATUM F.
5. DIMENSIONS  $A$  AND  $B$  ARE TO BE DETERMINED AT DATUM F.
6.  $A1$  IS DEFINED AS THE VERTICAL DISTANCE FROM THE SEATING PLANE TO THE LOWEST POINT ON THE PACKAGE BODY.

DIM	MILLIMETERS	
	MIN	MAX
A	1.25	1.75
A1	0.10	0.25
A3	0.17	0.25
b	0.31	0.51
D	4.80	5.00
E	3.80	4.00
e	1.00 BSC	
H	5.80	6.20
h	0.37 REF	
L	0.40	1.27
L2	0.25 BSC	
M	0°	8°

**RECOMMENDED SOLDERING FOOTPRINT**


**Revision History**

Note: page numbers for previous revisions may differ from page numbers in current version

<b>Page or Item</b>	<b>Subjects (major changes since previous revision)</b>
<b>Rev 1.0 datasheet, 2019-9-3</b>	
Whole document	New company logo released
Page 1	Remove "October 2016"